

# MARKET MAKER MODELS

## Waa mxay MMXM?

MMXM waxa laga soo gaabiyey [MARKET MAKER MODELS]

MMSM = Market Maker Sell Model → [x = Sell]

MMBM = Market Maker Buy Model → [x = Buy]

## MMXM waxaa loo isticmaala

- Si Loo fahmo sida market-maker u abuuro liquidity traps (buy/sell stops).
- Si Loo aqoonsado goorta suuqa la buy garenayo (Buy Model) ama la sell garenayo (Sell Model).
- Si Loo helo direction + precision entry adigoo isticmaalaya multi-timeframe mapping (HTF → LTF).

## MMXM wuxuu kaa caawinayaa inaad:

- Aragto big picture (HTF)
- Fahanto frameworka suqa (MMSM/MMBM)
- Qaadata entry smart ah (LTF)

## Entry sequence

## LTF

MMBM

ERL

IRL

### KEY LEVEL

### Accumulation

second stage

First stage of distribution

Low risk buy

DISCOUNT ARRAY

Market maker models

Time frame alignment

Forever model

Topdown analysis

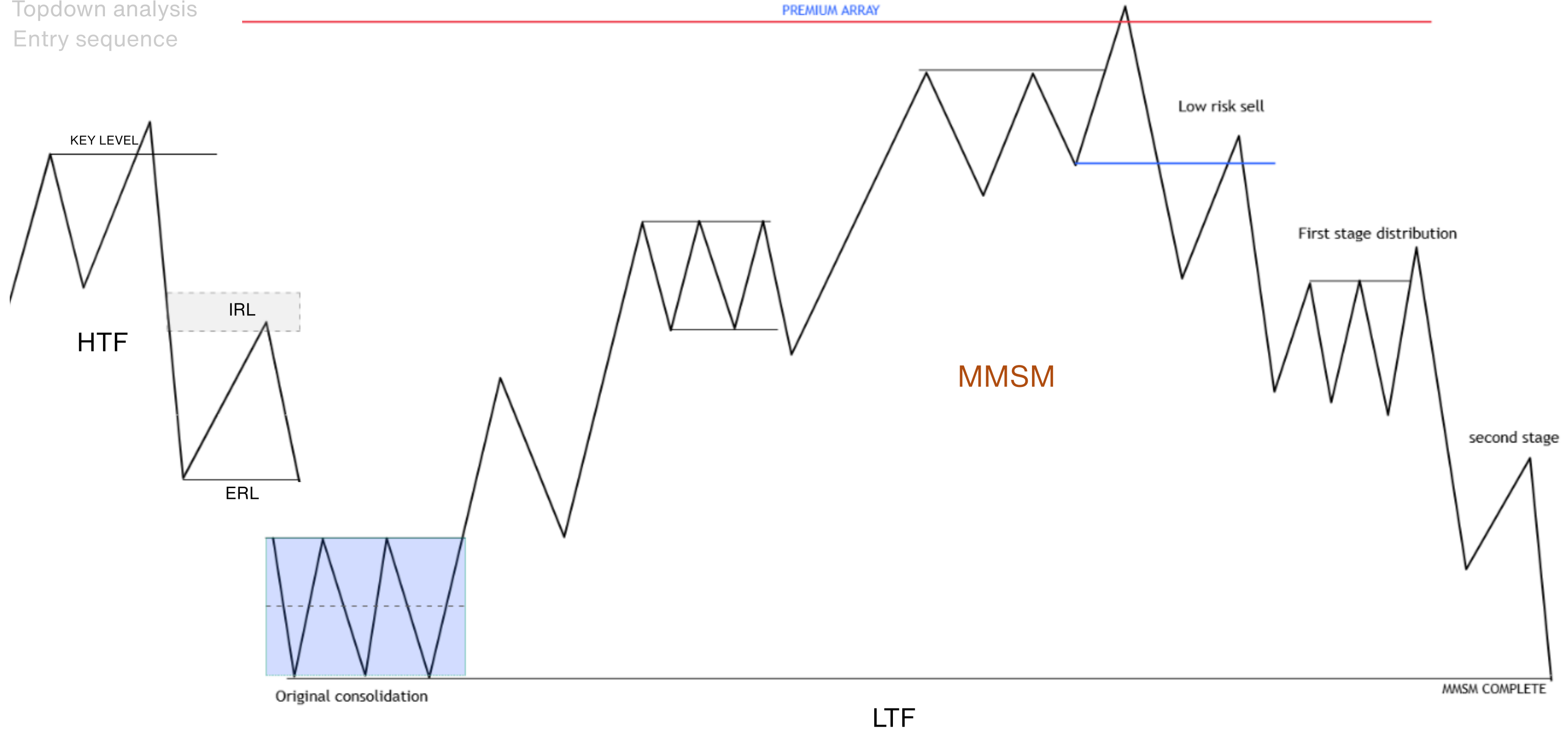
Entry sequence

## MARKET MAKER BUY MODEL



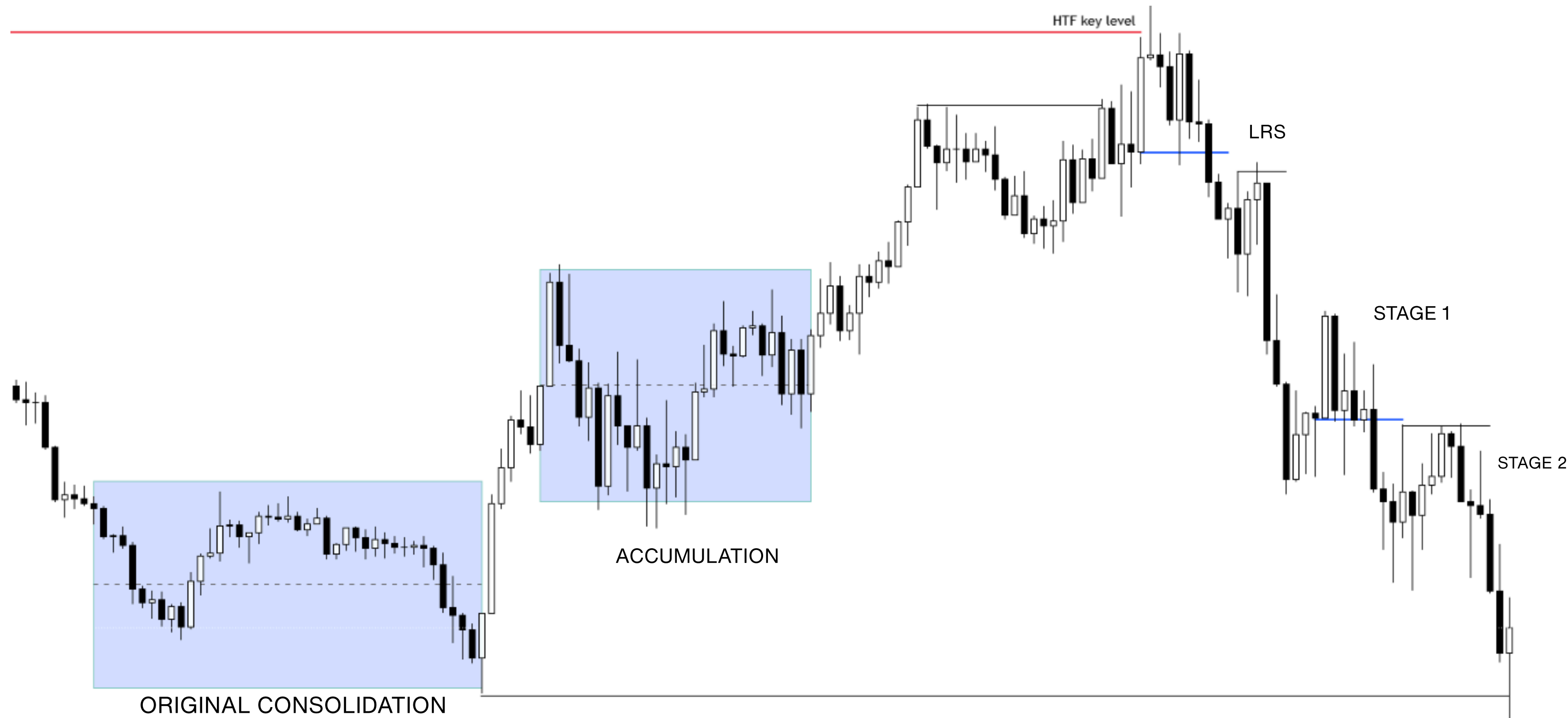
- Market maker models
- Time frame alignment
- Forever model
- Topdown analysis
- Entry sequence

# MARKET MAKER SELL MODEL



- Market maker models
- Time frame alignment
- Forever model
- Topdown analysis
- Entry sequence

# MARKET MAKER SELL MODEL



# TIME FRAME ALIGNMENT FOR THE MMXM

- monthly key level to the daily mmxm
- weekly key level to the 4hour mmxm
- daily key level to the 1hour mmxm
- 4hour key level to the 15m mmxm
- 1hour key level to the 5m mmxm
- 30m key level to the 3m mmxm
- 15m key level to the 1m mmxm